

Software for data loggers

testo ComSoft Basic
testo ComSoft Professional
testo ComSoft CFR

Three software versions – the right one for every application

testo ComSoft Basic – the free standard software

testo ComSoft Professional – the comprehensive software

testo ComSoft CFR 21 Part 11 – the software for pharmaceutical requirements

Convenient export functions e.g. for the further processing of the data in Microsoft Excel



For the purposes of programming and reading out the logger, as well as for the analysis of the data, you can choose between three different software versions. Testo has the right solution for your requirements: The free testo ComSoft Basic with a graphic user interface offers all the basic functions of a standard logger software. Independently of where the loggers are being used – the testo ComSoft Basic makes not only the configuration and readout of the instrument, but also the analysis of the data very easy. User-friendliness and intuitive operation are placed in the foreground here.

Further requirements, such as the collation of measurement

data created at different sites, are also excellently fulfilled by the testo ComSoft. Testo even offers an optimum software solution for the special requirements of the pharmaceutical industry: the testo ComSoft CFR 21 Part 11.

Software for data loggers

ComSoft Basic

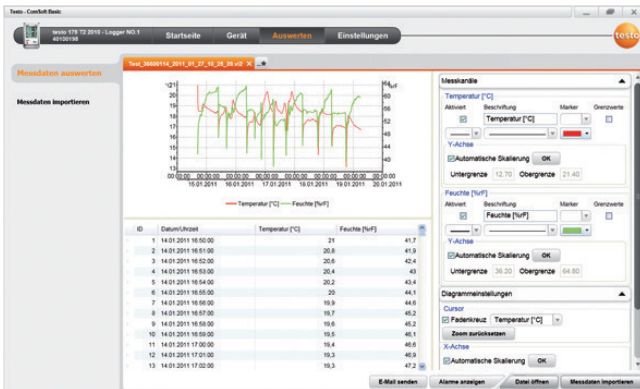
ComSoft Basic, Basic software for programming and readout of Testo data loggers; graphic and tabular measurement value presentation as well as export function.

Part no. 0572 0580

Free download at www.testo.com

ComSoft Basic – for easy operation and convenient analysis

- Free download of the ComSoft Basic at www.testo.com
- The ComSoft Basic offers all basic functions of a logger software
- Supports Testo data loggers from the instrument series testo 174, testo 175 and testo 176
- Can be run on Windows XP (Service Pack 3); Windows Vista; Windows® 7; Windows® 8; Windows® 8 Pro; Windows® 8 Enterprise; Windows® 10



Important functions

- Intuitive user interface guides the user through the individual processes step by step
- Graphic measurement value curve for clear presentation of the measurement values
- Logger configuration: start and stop criterion, measurement interval, storage rate and limit value adjustment
- Convenient export functions e.g. for the further processing of the data in Microsoft Excel, or the generation of a PDF which can be made available to other users.

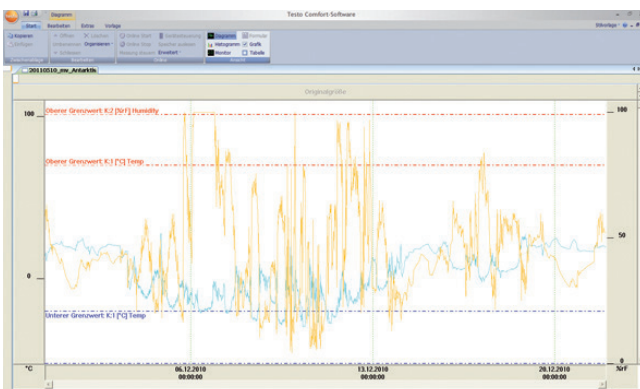
ComSoft Professional

ComSoft Professional Pro software incl. data archiving for programming and readout of Testo data loggers

Part no. 0554 1704

ComSoft Professional – for demanding users

- The ComSoft Professional offers analysis and presentation possibilities beyond the basic functions
- Multiple measurement sites and data loggers can be organized, e.g. in a clear tree structure
- Supports Testo data loggers from the instrument series testo 174, testo 175, testo 176 and testo 184
- Can be run on Windows® 7; Windows® 10; Windows® 8.1.



Important functions:


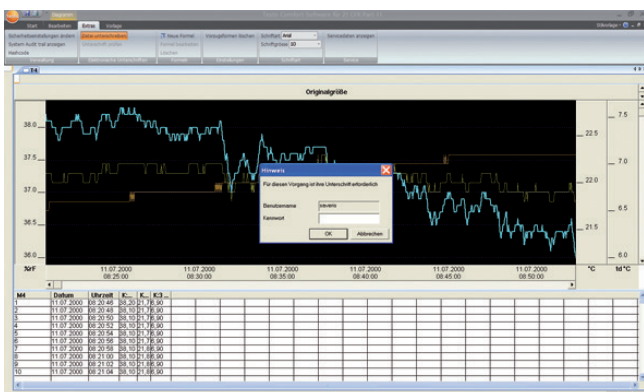
- Adaptation of menu and scope of function
- Selection of different print headings for tabular and graphic printout
- Extended presentation options such as number field, bar display, analog instrument and xy presentation
- Graphic measurement value curve for clear presentation of measurement values
- Logger configuration: start and stop criterion, measurement interval, storage rate and limit value adjustment
- Adjustment functions 0 (mean value) to 7th degree

Software for data loggers

ComSoft CFR 21 Part 11

ComSoft CFR 21 Part 11 – Software for requirements according to CFR 21 Part 11 for the programming and readout of Testo data loggers

Part no. 0554 1705

ComSoft CFR 21 Part 11 – specially for the requirements of the pharmaceutical industry

- The ComSoft CFR 21 Part 11 is a validatable software and fulfils all requirements of the FDA (Food and Drug Administration) in a closed system.
- Conformity with the CFR guidelines is confirmed by an independent institute.
- Supports Testo data loggers from the instrument series testo 174, testo 175, testo 176 and testo 184
- Can be run on Windows® 7 (except for the „HOME“ Edition); Windows® 8.1 Pro; Windows® 8.1 Enterprise; Windows® 10 Pro; Windows® 10 Enterprise; Windows® 10. Further operating systems on request.

Important functions:

- Administration of user groups by administrator
- Storage of raw data in tamper-proof file format
- Recognition of carry-over errors thanks to test sums
- Inactivity lockout to prevent unauthorized access
- Monitoring of login/logout activity, successful/unsuccessful use of digital signatures and alteration of raw data with the help of an Audit Trail

And which software will you choose?

Select the right software for your application:

	ComSoft Basic 0572 0580	ComSoft Professional 0554 1704	ComSoft CFR 21 Part 11 0554 1705
Logger readout / configuration	X	X	X
Storage rate and measurement interval adjustment	X	X	X
Data export as .xls / .pdf / .html / .csv	X	X	X
Display of diagram and table	X	X	X
Adjustment		X	X
Scientific / statistical evaluation (min./max.; mean value, limit value violation)		X	X
Creation of formulae		X	X
Online measurement		X	X
Report template		X	X
Data archiving		X	X
Electronic signature			X
Allocation of access rights at 3 user levels			X
Audit trail			X

Accessories

	Part no.	
Cable for connecting the data loggers testo 175 and testo 176 to the PC, Mini-USB to USB	0449 0047	
SD card - for collecting the measurement data from the data loggers testo 175 and testo 176; 2 GB; application range to -20 °C	0554 8803	
USB interface for programming and readout of the loggers testo 174T and testo 174H	0572 0500	

0981 4014/msp/04.2022

Subject to change without notice.



Hassellunden 11A, 2765 Smørum
Tel. 45 95 04 10
info@buhl-bonsoe.dk
www.buhl-bonsoe.dk